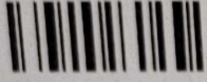




Series ψ YZXW



Set-4

प्रश्न-पत्र कोड
Q.P. Code

89

रोल नं.

Roll No.

23222753

परीक्षार्थी प्रश्न-पत्र कोड को उत्तर-पुस्तिका के मुख-पृष्ठ पर अवश्य लिखें।

Candidates must write the Q.P. Code on the title page of the answer-book.

सूचना प्रौद्योगिकी

INFORMATION TECHNOLOGY

निर्धारित समय : 2 घण्टे

Time allowed : 2 hours

अधिकतम अंक : 50

Maximum Marks : 50

- कृपया जाँच कर लें कि इस प्रश्न-पत्र में मुद्रित पृष्ठ 15 हैं।
- प्रश्न-पत्र में दाहिने हाथ की ओर दिए गए प्रश्न-पत्र कोड को परीक्षार्थी उत्तर-पुस्तिका के मुख-पृष्ठ पर लिखें।
- कृपया जाँच कर लें कि इस प्रश्न-पत्र में 21 प्रश्न हैं।
- कृपया प्रश्न का उत्तर लिखना शुरू करने से पहले, उत्तर-पुस्तिका में प्रश्न का क्रमांक अवश्य लिखें।
- इस प्रश्न-पत्र को पढ़ने के लिए 15 मिनट का समय दिया गया है। प्रश्न-पत्र का वितरण पूर्वाह्न में 10.15 बजे किया जाएगा। 10.15 बजे से 10.30 बजे तक परीक्षार्थी केवल प्रश्न-पत्र को पढ़ेंगे और इस अवधि के दौरान वे उत्तर-पुस्तिका पर कोई उत्तर नहीं लिखेंगे।
- Please check that this question paper contains 15 printed pages.
- Q.P. Code given on the right hand side of the question paper should be written on the title page of the answer-book by the candidate.
- Please check that this question paper contains 21 questions.
- Please write down the serial number of the question in the answer-book before attempting it.
- 15 minute time has been allotted to read this question paper. The question paper will be distributed at 10.15 a.m. From 10.15 a.m. to 10.30 a.m., the candidates will read the question paper only and will not write any answer on the answer-book during this period.



General Instructions :

- (1) Please read the instructions carefully.
- (2) This question paper consists of 21 questions in two sections : Section A & Section B.
- (3) Section-A has Objective Type Questions whereas Section B contains Subjective Type Questions.
- (4) Out of the given (5 + 16 ⇒) 21 questions, a candidate has to answer (5 + 10 ⇒) 15 questions in the allotted (maximum) time of 2 hours.
- (5) All questions of a particular section must be attempted in the correct order.
- (6) **Section-A : Objective Type Questions (24 Marks)**
 - (i) This Section has 05 questions.
 - (ii) Marks allotted are mentioned against each question/part.
 - (iii) There is no negative marking.
 - (iv) Do as per the instructions given.
- (7) **Section-B : Subjective Type Questions (26 Marks)**
 - (i) This Section has 16 questions.
 - (ii) A candidate has to do 10 questions.
 - (iii) Do as per the instructions given.
 - (iv) Marks allotted are mentioned against each question/part.

SECTION - A (Objective Type Questions)

1. Answer any 4 out of the given 6 questions on Employability Skills. $4 \times 1 = 4$
- (i) _____ refers to focussing human efforts for maintaining a healthy body and mind, capable of withstanding stressful situations. 1
 - (a) Artificial Intelligence
 - (b) Stress management
 - (c) Motivation
 - (d) Emotional intelligence
 - (ii) Which of the following is not the benefit of stress management ? 1
 - (a) Boosts immunity
 - (b) Reduces efficiency
 - (c) Improves mood
 - (d) Prevents behavioural problems



- (iii) _____ are computer programs that can damage the data and software programs or steal the information stored on a computer. 1
- (a) Spam (b) Viruses
(c) Junk mail (d) BIOS
- (iv) _____ is a horizontal bar present at bottom of the Windows 7 desktop. 1
- (a) Status Bar (b) Menu Bar
(c) Task Bar (d) Recycle bin
- (v) State whether the following statement is a myth or reality : 1
Entrepreneurs are born a certain way.
- (vi) Which one of the following is not true for entrepreneurs ? 1
- (a) They create needs and demands.
(b) They provide raw materials.
(c) They do not create jobs.
(d) They help society by supporting infrastructure development.


2. Answer any 5 out of the given 6 questions. $5 \times 1 = 5$

- (i) _____ controls all aspects of a paragraph's appearance, such as text alignment, tab stops, line spacing, and borders, and can include character formatting. 1
- (a) Page Style (b) Character Style
(c) Cell Style (d) Paragraph Style
- (ii) How many levels of headings does Open Office Writer evaluate to build the Table of contents ? 1
- (a) 8 (b) 9
(c) 10 (d) 12
- (iii) Reema has created a pamphlet on 'Tour to West India'. She has inserted many images to make it more presentable but the size of images is occupying a lot of space. Her friend has suggested her to reduce the size of images. Which of the following options will help her in doing the task without losing any content of the image ? 1
- (a) Recolor (b) Docking
(c) Resize (d) Rotate



- (iv) Which of the following Graphic filter is used to increase the contrast of an image in a document ? 1
- (a) Smooth (b) Sharpen
(c) Remove Noise (d) Invert
- (v) Which of the following is not used when creating a mail-merge document ? 1
- (a) Spreadsheet (b) Document
(c) Paint (d) Database
- (vi) Which mode is used to apply a style to many different areas of a document quickly without going back to styles and formatting window in Writer ? 1

3. Answer any 5 out of the given 6 questions. 5 × 1 = 5

- (i) A colored border, with _____, appears around a cell where changes are made in a shared worksheet. 1
- (a) a dot in the upper left-hand corner 
(b) a dot in the lower left-hand corner
(c) a cross in the upper left-hand corner
(d) a cross in the upper right-hand corner
- (ii) _____ feature adds data arranged in a group of cells in Calc, with labels for columns and/or rows. 1
- (a) Average (b) Subtotal
(c) Goal seek (d) Solver
- (iii) A _____ refers to a cell or a range of cells on a worksheet whose data values can be used in a formula. 1
- (a) sheet (b) cell
(c) cell reference (d) cell data
- (iv) _____ feature of Calc is used to test 'what-if' questions. 1
- (a) Solver (b) Goal seek
(c) Scenario (d) Styles



(v) Macros are especially useful to _____ the same way over and over again. 1

- (a) repeat a task (b) reject a task
(c) report a task (d) comment a task

(vi) _____ feature of Calc helps to track what data was changed, when the change was made, who made the change and in which cell the change has occurred. 1

- (a) Record Changes (b) Edit record
(c) Change record (d) Macro

4. Answer any 5 out of the given 6 questions. 5 × 1 = 5

(i) Which one of the following is not an example of DBMS ? 1

- (a) PostgreSQL (b) SQLite
(c) FoxPro (d) Impress

(ii) A _____ is an interface in a user specified layout that lets users to view, enter, and change data directly in database objects such as tables. 1

- (a) frame (b) form
(c) relation (d) report

(iii) Which of the following is expanded form of SQL ? 1

- (a) Systematic Query Language
(b) Structured Query Language
(c) Software Query Language
(d) Structural Query Language

(iv) _____ is usually suitable for less amount of data. (Relational/Flat file) 1

(v) Binary data types in a database can be using for storing _____. 1

- (a) photos, music files, etc. (b) integer values
(c) only image files (d) only video files

(vi) _____ clause can be used with the SELECT statement in SQL to specify which rows to retrieve from the table. 1

- (a) WHERE (b) GROUP
(c) SAME (d) SIMILAR



5 × 1 = 5

5. Answer any 5 out of the given 6 questions.

- (i) _____ is an accessibility function which is designed for people who have vision impairment or cognitive disabilities. 1
- (a) Filter Keys (b) Sound Key
(c) Toggle Keys (d) Sticky Keys
- (ii) Networks in which certain computers have special dedicated tasks, providing services to other computers (in the network) are called _____ networks. 1
- (a) hierarchical (b) dedicated server
(c) peer to peer (d) client server
- (iii) _____ provides Internet access by transmitting digital data over wires of a local telephone network. 1
- (a) HSDPA (b) P2P
(c) DSL (d) Modem
- (iv) A _____ is an unplanned event that may happen all of a sudden and may lead to unwanted or unprecedented results/outcomes. 1
- (a) emergency ~~(b) hazard~~
~~(c) accident~~ (d) illness
- (v) A _____ worker will always perform to the best to his ability. 1
- (a) fast working ~~(b) highly educated~~
(c) happy and healthy (d) stressed
- (vi) _____ is the process of emptying a place in case of an emergency, disaster. 1
- ~~(a) Emergency~~ (b) Accident
(c) Drill (d) Evacuation



SECTION - B
(Subjective Type Questions)

Answer any 3 out of the given 5 questions on Employability Skills.

Answer each question in 20-30 words. $3 \times 2 = 6$

6. What is self-awareness ? Also give any two benefits of self-awareness. 2

7. Give one example each of following stress causal agents for students :

(a) Mental

(b) Social 2

8. Differentiate between files and folders. 2

9. Give any two qualities of a successful entrepreneur. 2

10. Give any two promotional functions of an entrepreneur. 2

Answer any 4 out of the given 6 questions in 20-30 words each. $4 \times 2 = 8$

11. Differentiate between Keep scale and Keep image size options while cropping an image in a document. 2

12. Give any two characteristics of a template in Open Office Writer. 2

13. Why do we need to merge worksheets ? 2

14. What is a Primary Key ? How is it different from foreign key ? 2

15. Expand and explain the term WAN. 2

16. (a) Identify the following network / Internet connectivities as wired or wireless :

(i) Dial-up

(ii) WiMax 2

(b) Give any one feature of Instant messaging.



Answer any 3 out of the given 5 questions in 50-80 words each. $3 \times 4 = 12$

17. Explain the following terms with respect to positioning the graphics in a document : 4

- (a) Arrangement
- (b) Text Wrapping

18. Distinguish between the following with respect to spreadsheets : $2 + 2 = 4$

- (a) Relative and Absolute hyperlink.
- (b) Internet hyperlink and Document hyperlink.

19. Explain any four data types of DBMS. 4

20. (a) Structure of a table "Orders" is given below. Suggest suitable data type of each column 4

Table : Orders

Order_ID	Order_date	Customer_ID	Amount
A_101	12/12/19	C3445	1200.00
A_202	11/09/19	C1245	3456.00
A_402	09/07/19	C2121	2312.00

(b) Consider the following table "Books".

BkID	BkName	Author	Qty	Price
B_101	Learning with Fun	Jacobins	5	355.00
B_103	How I Live Now	Meg Rosoff	4	400.00
B_104	I Capture the Castle	Dodie Smith	5	520.00
B_106	Mortal Engines	Philip Reeve	4	260.00
B_110	The Kite Rider	Geraldine McCaughrean	3	270.00

Write SQL queries to

- (i) Display data of all books whose quantity is more than 3.
- (ii) Display total amount of all books whose price is less than 500.
(Hint : amount = Qty × Price)

For visually impaired candidates.

Explain various relationships that can be created between two tables in a database. 4

21. (a) Give two best practices for internet safety. $2 + 2 = 4$
(b) Give any two Falls and Slips Safety rules.